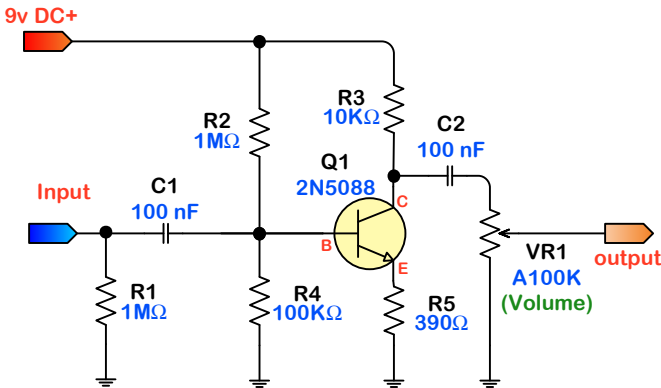


# LPB-1 Booster

The Electro-Harmonix LPB-1 booster is an old design dating back many years. It's simplicity belies the fact that you can get great sounds out of just a few parts. The single transistor does all of the work. R2 and R4 set the bias level, C1 is the input cap, and C2 is the output cap.



## Mods!

- The C1 capacitor filters the input signal. The 100nf part is large enough that bass content of the input signal is preserved. But what if you want to remove bass content? In other words, make a treble booster instead? Simple: lower the value of C1. Try values from 50pf to 22nf.
- You can increase the amount of headroom (how loud you can go before the signal starts to clip/overdrive) by increasing the input voltage. If you have a 12 volt DC adaptor, plug that in to experiment.
- You can lower the gain of the circuit by using lower gain transistors. Try any of the bipolar silicon NPN parts in the parts stash. Be sure to check the pinouts!

in  
out

