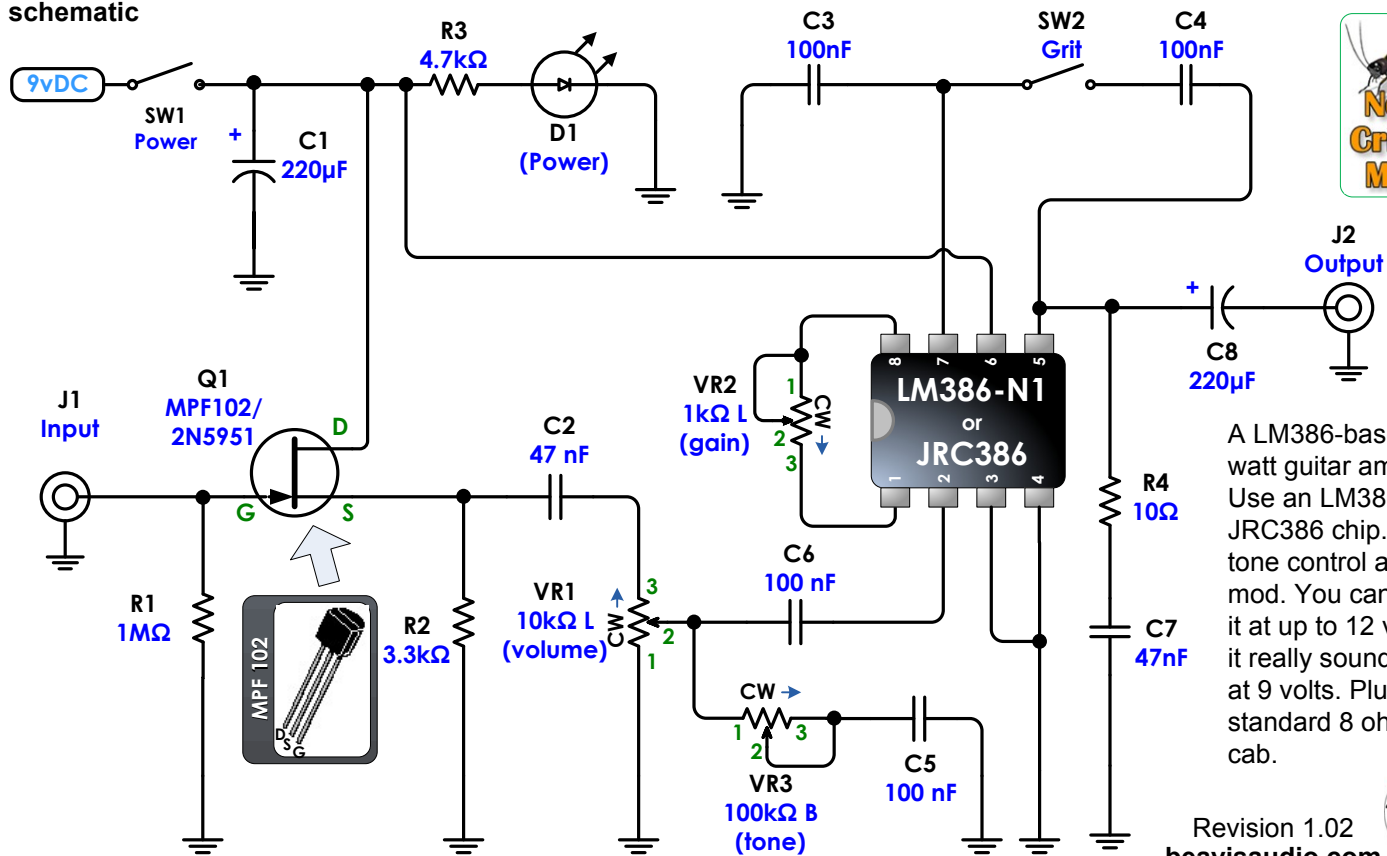


schematic

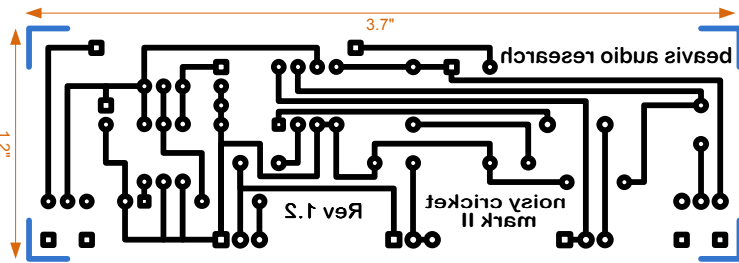


A LM386-based ½ watt guitar amplifier. Use an LM386 or JRC386 chip. Simple tone control and “grit” mod. You can power it at up to 12 volts, but it really sounds best at 9 volts. Plug into a standard 8 ohm guitar cab.

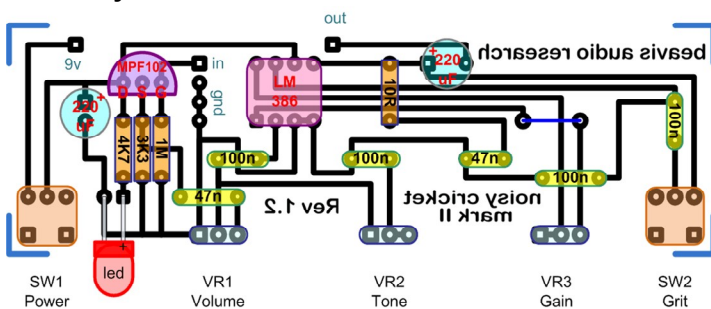
Revision 1.02
beavisaudio.com



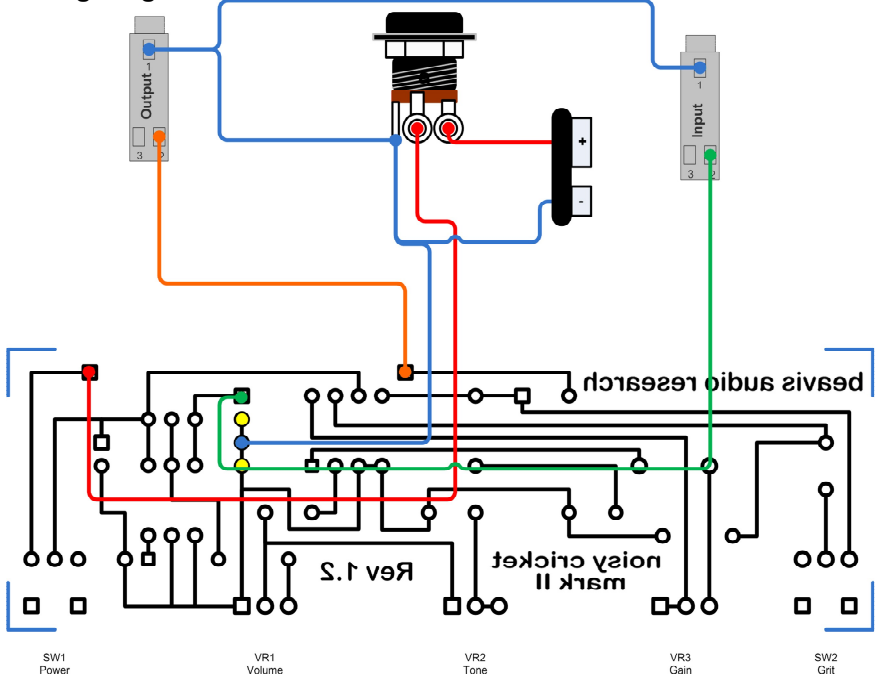
PCB transfer



Parts Layout



Wiring Diagram

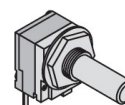


Parts List

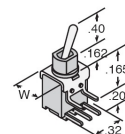
- R1 – 1M
- R2 – 3K3
- R3 – 4K7
- R4 – 10R
- C1 – 220uf electro
- C2 – 47nf poly film
- C3 – 100nf poly film
- C4 – 100nf poly film
- C5 – 100nf poly film
- C6 – 100nf poly film
- C7 – 47 nf poly film
- C8 – 220uf electro
- SW1- SPST toggle
- SW2 – SPST toggle
- VR1 – 10K Linear
- VR2 – 100K Linear
- VR3 – 1K Linear
- U1 – LM386N1
- Q1 – MPF102

PCB-Mounted Components

For the Mark II, I decided to use PCB-mounted pots and switches to reduce the amount of off-board wiring. You can get them from mouser.com.



Mouser Part #:
311-1901F-1K,311-1901F-10K, and 311-1901F-100K



Mouser Part #:
108-2AS1T1609-EVX